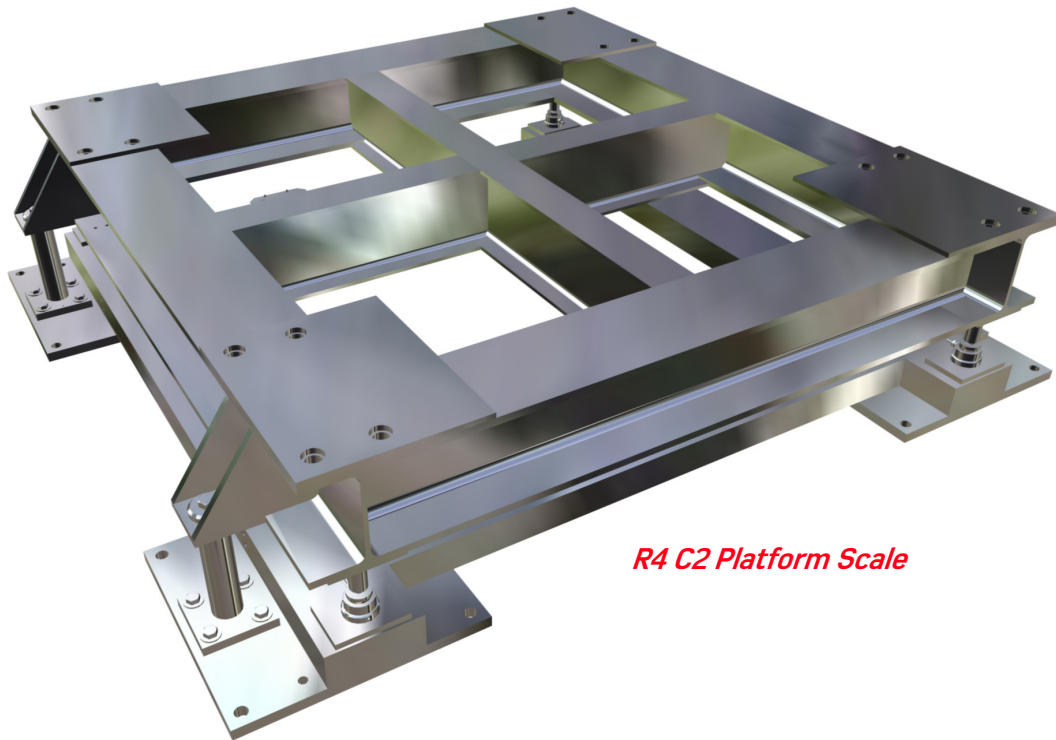


R4 C2 Platform Scale Class II Industrial Platform Scale



R4 C2 Platform Scale

Application

The R4 C2 platform scale is a unique product on the market, offering the metrological characteristics of a laboratory instrument although adapted to use in an industrial environment. It has been specially designed for activity sectors that deal with large-capacity logistics units for rare and/or pricey products.

General description

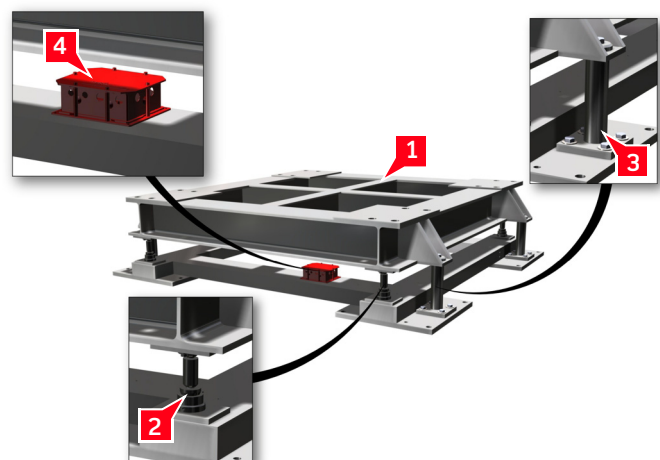
Thanks to the new technology developed in this type of receptor, the performance of load cells is greater for an optimal accuracy. It is made up of:

- ▼ a steel or a stainless steel mechanical infrastructure (1) that receives the load to be weighed,
- ▼ 4 high resolution compression load cells (2),
- ▼ a perfectly adapted load transmission system that is associated to lateral limiters (3) offering the required freedom to measurement accuracy while ensuring the physical integrity of load cells.

Available models

Combined with the I400 terminal, the R4 C2 platform scale offers a complete range of Class II certified instruments, available for 2 to 19-tonne capacities for a minimum division of 100g.

Our experience and command of the product, along with its modular design, enable us to offer, with a validation from our engineering department, dimensions adapted to specific loads and working site environments.



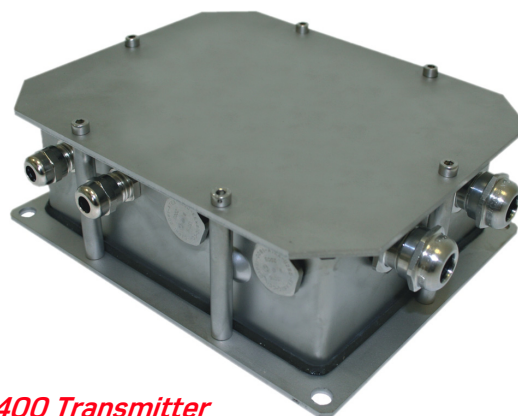
Instrumentation

It is made up of:

- ▼ an I 400 transmitter (4) set onto the platform scale that ensures the physical connection of load cells and the secured weight digital transmission;
- ▼ an I 400 terminal that is the main system element in terms of man/machine interface. It offers a wide range of application software designed for product management issues. Furthermore, via its PLC-oriented development workshop, any dedicated application can be performed to perfectly meet:
 - existing hardware or software configurations (PLC, field bus, protocols...),
 - specific features (peripheral control, data collection and processing),
 - special IT interconnection requirements (remote information feedback and processing).



I 400 Terminal




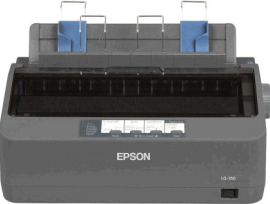


I 400 Transmitter

Metrological characteristics

- | | | | |
|------------------------------------|--------|--|---------|
| ▼ Accuracy class | II | ▼ Maximal tare effect..... | - Max |
| ▼ Capacity (Max): | | ▼ Verification division (d) | ≥ 100 g |
| • Minimal | 2 t | ▼ CE approval certificate of type N° LNE 13774 rev. 1 of 30 July 2009. | |
| • Maximal | 19 t | | |
| ▼ Maximal number of divisions..... | 20 000 | | |

Options & Accessories

Bar code reader	Field bus coupler	Ticket printer	Listing printer
	 <i>I 410 G Coupler</i>		

Your specialist

Illustrations not contractual. Precia-Molen reserves the right to alter the characteristics of the equipment described in this brochure at any time.

PRECIA-MOLEN Headquarters & Factory
 BP 106 - 07000 Privas - France
 Tel. 33 (0) 475 664 600
 Fax 33 (0) 475 664 330
 E-MAIL webmaster@preciamolen.com

RCS: 386 620 165 RCS Aubenas

